

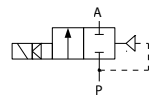
NO PRESSURE DIFFERENCE REQUIRED FOR VALVE OPERATION



TECHNICAL DATA:

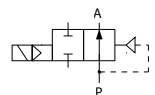
- **Internal parts:** stainless steel
- **Seals:** NBR, EPDM, FPM
- **Fluid temperature:**
min -10°C; max +85°C (NBR); +100°C (FPM); +130°C (EPDM)
- **Ambient temperature:** max +55°C
- **Viscosity:** max 21 mm²/s
- **Response time:** opening 0.1 - 1 s;
closing 0.5 - 5 s
- **Voltage:** 230, 115, 48, 24 V AC; 24, 12 V DC
- **Duty cycle:** continuous (ED100%)
- **Cycling rate:** 10 - 100 cycles/min
- **Electrical protection:** IP65
(with plug to ISO 4400)
Long term use in humid environment requires the use of sealing sets.

Closed when de-energised (NC)



Ports	Orifice size [mm]	Kv (water at 1bar) [l/min]	Differential pressure [bar]		Body	Mass [kg]	Coil type	Model	Order code	Fig.
			min	max						
G1/2	12	40	0	10	brass	0.43	TM30	M2451	301702	1
G3/4	18	65	0	10	brass	0.8	TM35	M2521	301701	2
		54	0	5	PA	0.5	TM35	M252PA	301660	3
G1	25	180	0	10	brass	1.2	TM35	M2621	301709	4
G6/4	40	330	0	1	brass	2.75	TM40	M275	370811	5

Open when de-energised (NO)



Ports	Orifice size [mm]	Kv (water at 1bar) [l/min]	Differential pressure [bar]		Body	Mass [kg]	Coil type	Model	Order code	Fig.
			min	max						
G1/2	10	40	0	1	brass	0.43	TM35	M2451NO	301690	1
G3/4	18	65	0	1	brass	0.76	TM35	M2521NO	301685	2
G1	25	180	0	1	brass	1.2	TM35	M2621NO	301676	4

OPTIONS:

- EEx me II explosionproof coils
- NPT ports
- Other versions on request.