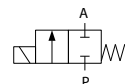
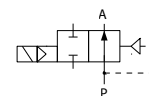



TECHNICAL DATA:

- **Internal parts:** stainless steel
 - **Seals:** FPM, PTFE
 - **Fluid temperature:** -10°C to +110°C
 - **Ambient temperature:** max +55°C
 - **Viscosity:** max 21 mm²/s
 - **Response time:** closing 10 - 30 ms
 - **Voltage:** 230, 115, 48, 24 V AC / 24, 12 V DC
 - **Duty cycle:** continuous (ED100%)
 - **Cycling rate:** 10 - 100 cpm
 - **IP rating:** IP65 (with plug to ISO 4400)
- Long term use in humid environment requires the use of sealing sets.

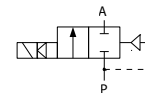
DRAIN VALVES, CLOSED WHEN DE-ENERGISED (NC)


Ports	Orifice size [mm]	Kv (water at 1 bar) [l/min]	Differential pressure [bar]		Body	Seal	Mass [kg]	Coil type	Model	Order code	Fig.
			min	max							
G1/4	4.5	7.5	0	15	Brass	FPM	0.35	TM30	D4K	321502	1
G3/8	4.5	7.5	0	15	Brass	FPM	0.35	TM30	D4K	321503	
G1/2	4.5	7.5	0	15	Brass	FPM	0.35	TM30	D4K	321505	

AIR RELEASE VALVES, OPEN WHEN DE-ENERGISED (NO)


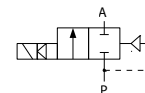
Ports	Orifice size [mm]	Kv (air) [m ³ /h]	Differential pressure [bar]		Body	Seal	Mass [kg]	Coil type	Model	Order code	Fig.
			min	max							
G1/8	2	2.7	0	12	Brass	FPM	0.25	TM30	XD2NO	320010	-
G1/2	10	72	0.3	12	Brass	FPM	0.43	TM30	M24KNO	349514	2
	10	72	1	16	Brass	PTFE	0.5	TM30	B24NO	316322	3
G1	25	648	1	18	Brass	PTFE	1.66	TM35	B26NO	316350	4
G6/4	40	1260	1	18	Brass	PTFE	3.25	TM35	B26NO	316362	
G2	50	2268	1	18	Brass	PTFE	5.45	TM35	B26NO	316374	

VALVES FOR AIR DRYERS, CLOSED WHEN DE-ENERGISED (NC)



Ports	Orifice size [mm]	Kv (air) [m3/h]	Differential pressure [bar]		Body	Seal	Mass [kg]	Coil type	Model	Order code	Fig.
			min	max							
G1	25	648	1	20	Brass	PTFE	1.66	TM35	B26	316502	5
G6/4	40	1260	1	20	Brass	PTFE	3.25	TM35	B26	316522	
G2	50	2268	1	20	Brass	PTFE	5.45	TM35	B26	316542	

OIL STOP VALVES, CLOSED WHEN DE-ENERGISED (NC)



Ports	Orifice size [mm]	Kv (air) [m3/h]	Differential pressure [bar]		Body	Seal	Mass [kg]	Coil type	Model	Order code	Fig.
			min	max							
G1	25	180	1	18	Brass	PTFE	1.51	TM30	B26	316401	5
G6/4	40	350	1	18	Brass	PTFE	3.1	TM30	B26	316451	
G2	50	630	1	18	Brass	PTFE	5.3	TM30	B26	316481	

OPTIONS:

- EEx me II explosionproof coils
- NPT ports
- Other versions on request.