

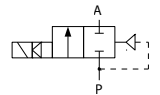
Pulse (or shock) valves are used both in dust clean blowing systems for pulse bag filters, and in boiler soot removal systems. The main characteristics of pulse valves are large flow capacity and extremely short opening time (around 5 ms). These result in powerful sonic shock wave which efficiently removes dust particles (bag filters) or sediments in boiler tubes. Our valves are designed for long and reliable operation with minimum maintenance.



TECHNICAL DATA:

- **Internal parts:** brass, stainless steel
- **Seals:** NBR
- **Fluid temperature:** -10°C to +85°C
- **Ambient temperature:** max +55°C
- **Viscosity:** max 21 mm²/s
- **Response time:** opening 5 ms;
closing 100 ms
- **Voltage:** 230, 115, 48, 24 V AC; 24, 12 V DC
- **Duty cycle:** continuous (ED100%)
- **Cycling rate:** 10 - 100 cycles/min
- **Electrical protection:**
IP65 (with plug to ISO 6952 / ISO 4400)
Long term use in humid environment
requires the use of sealing sets.

Closed when de-energised (NC)



Ports	Orifice size [mm]	Kv (water at 1bar) [l/min]	Differential pressure [bar]		Body	Mass [kg]	Coil type	Model	Order code	Fig.
			min	max						
G1	25	180	0.3	8	Brass	1.2	TM30	M260Y	362865	1
G6/4	40	350	0.3	8	Brass	2.75	TM30	M270Y	372865	2

OPTIONS:

- EEx me II explosionproof coils
- NPT ports
- Other versions on request.