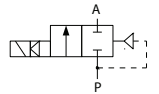


### TECHNICAL DATA:

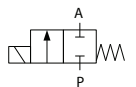
- **Internal parts:** stainless steel
- **Seals:** NBR, EPDM
- **Fluid temperature:** max +75°C
- **Ambient temperature:** max +50°C
- **Viscosity:** max 21 mm<sup>2</sup>/s
- **Response time:** closing 10 - 30 ms
- **Voltage:** 12/24 V DC, 24/48/115/230 V AC
- **Duty cycle:** continuous (ED100%)
- **Cycling rate:** 10 - 100 cpm
- **Electrical protection:** IP54 or IP65

### VALVES WITH PLASTIC BODIES, CLOSED WHEN DE-ENERGISED (NC)



Ports	Orifice size [mm]	Kv (water at 1bar) [l/min]	Differential pressure [bar]		Body	Seal	Mass [kg]	Coil type	Voltage	Model	Order code	Fig.
			min	max								
G3/4	7.3	17	0.3	10	POM	EPDM	0.1	TM11	230 V AC	1090	311210	1
	7.3	17	0.3	10	POM	EPDM	0.1	TM11	230 V AC	1180	312210	2
M12x1	5.5	9.5	0.3	10	PA	EPDM	0.1	TM11	230 V AC	1090N	311212	3
	5.5	9.5	0.3	10	PA	EPDM	0.3	TM11	230 V AC	3000N	315211	4
G3/4	7.3	17	0.3	10	PA	EPDM	0.2	TM11	230 V AC	2180	314210	5
	7.3	17	0.3	10	PA	EPDM	0.3	TM11	230 V AC	3180	316209	6

### FUEL SUPPLY SHUT-OFF VALVE, CLOSED WHEN DE-ENERGISED (NC)



Ports	Orifice size [mm]	Kv (water at 1bar) [l/min]	Differential pressure [bar]		Body	Seal	Mass [kg]	Coil type	Voltage	Model	Order code	Fig.
			min	max								
6 mm	4	5.9	0	2	Brass	NBR	0.26	TM30	12 V DC	D115	380051	9